



Te Kura o Otari  
Otari School

News

Phone: 475-3018

Email: office@otari.school.nz

Bank account: 060561-0017355-00

*Inspiring a love of learning through an education that values the development of the whole child*

16 November 2021

Week 5, Term 4

## ***Kia ora koutou***

Happy Birthday - Ra whanau ki a koe .... Arama Clemerson-Phillips (Kōwhai) and Te Aokawhai Hemi (Kaikōmako).

We hope you had, are having or will have - a wonderful day!



Welcome to a new child and her whānau. Nau mai, haere mai ki te ākongā hou me tōna whānau: Esmé Gleisner (Kākano)

**Immersion Strand Whanau Hui** is on tonight in Tui. Shared kai at 5pm and hui will start at 5.30-7pm. Nau mai, haere mai whānau.

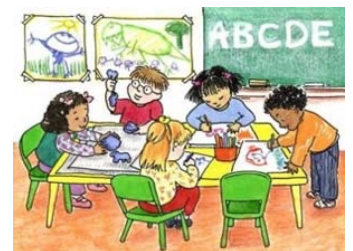


**Congratulations** to two former students - Alice Thompson was recently elected joint head girl of Wellington Girl's College and Regina Fernandes was elected Deputy Head Girl of St Mary's College. We are very proud of you both. All the best for your leadership roles in 2022! Alice and Regina were at Otari School for their entire schooling and both in the Montessori Strand.

### **Classrooms and Kaiako for 2022**

#### ***Original Strand:***

**Kākano, Yr 1 and 2:** Britta Martini will continue to be the main teacher in Kākano. She will continue with Reading Recovery in the afternoon and the afternoon teacher will be Rebecca McKenzie-Pollock. Rebecca will be working in Kākano from 12pm every day.



**Kākāriki, Yr 2 and 3:** Susan West will continue to be the teacher of Kākāriki. On a Thursday, she will be released from her Deputy Principal and SENCO work. The teacher on Thursday is yet to be determined.

**Kererū, Yr 4 and 5:** Sacha Fell will return as the main teacher in Kererū for three days. On Thursday she will be released to undertake work in relation to her science leadership throughout the school. Releasing her will be Christine Dowell, who will teach in Kererū on Thursday and Friday.

**Tōtara, Yr 6, 7 and 8:** Johanne Wicks will remain as the full-time teacher in Tōtara.

#### ***Montessori Strand:***

**Pōhutukawa, Yr 1, 2, 3 and 4:** Paula will continue to be the main teacher in Pōhutukawa, with Catherine Hope teaching 1 day per week. Kanae Tsuji will remain as teaching assistant.

**Ngaio, Yr 4 (9 year olds), 5, 6 7, and 8:** Deborah Sorensen will continue to teach in Ngaio for 4 days and Catherine hope will teach one day per week.

**Supporting the Original and Montessori Strands:** Shani Leda will be working 2 days per week to provide literacy and mathematics support and providing release for assessment. Tom Wild will be releasing teachers, 2 days each, throughout the term.

***Immersion Strand:***

**Kōwhai, Yr 1 and 2:** Whaea Lynette Franklin will continue as kaiako in Kōwhai.

**Tūi, Yr 3 and 4:** Whaea Erana Bouzaid wil continue as kaiako in Tūi.

**Kaikōmako, Yr 5, 6, 7 and 8:** Whaea Wairere Ropata will remain as kaiako in Kaikōmako. She will released one day per week for her Assistant Principal and strand leader work. Tom Wild will provide this release, teaching te reo Pakeha to year 6 – 8 for some of this day.

**Supporting Māori Immersion Strand:** Whaea Nichole Craig will be working with students throughout the strand, working every day. She will also release kaiako for 6 of those days, each term. Whaea Parekohai will continue full time in her role as Kaiarahi i te reo and Whaea Katrina will also continue in her kaiawhina role, supporting the strand.

More detail about how each class and strand will run, how extra staff are utilised and what other programmes will look like will be provided next year at an information afternoon or evening hosted by each strand early in the year.

A full staff list will be provded at the start of next term.

**The Yr 8 Farewell** - I am trying to organise the Year 8 Farewell within the Ministry of Education guidelines. However it is difficult to predict exactly what these will look like by December 13th. There will be an event that involves the year 8 students making speeches and a presentation of awards. Whether we will have a parent audience on site is yet to be decided. Please understand this is a difficult time for schools and decisions in relation to Covid-19 guidelines and events are made carefully. I will consult further with staff and inform you next week how we will be managing the year 8 farewell this year.



gg74491937 GoGraph.com

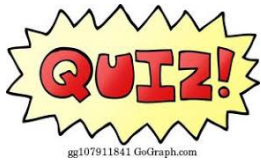


**Caretaker out of action** - Alan is out of action due to a knee injury. He will not be back this year, however we will continue to keep the lawns mowed and the senior students are doing a good job of emptying the bins on a Friday.

**Caretaker Next Year** - We need a new Caretaker from mid February. Please check out our advertisement on Job Seek if you are interested.

**Staff Wanted** - Otari After School Care are looking for full time staff to start next year. Three hours every Monday - Friday during school terms. Please contact Deanne on 0276097975 or email [otariafterschoolcare@gmail.com](mailto:otariafterschoolcare@gmail.com).





Montessori at Otari School are holding their Quiz Night fundraiser this Thursday, 18th November and to coincide with the event, are holding an online silent auction.

The auction is on Facebook and some great prizes have been donated to our community. There are ferry crossings, hampers from Countdown, Mitre10 and Commonsense, beauty, photography and Capital E vouchers.

You can see and bid for them all here: <https://tinyurl.com/3d85c5wh> - please share this with people who may be interested!!

If you'd like to come along, or get a team together to come to the quiz, it is at One Fat Bird in Karori at 7pm for a 7.30pm start and tickets are \$15pp. If you'd like to come along email us at [wiltonmontessoritrust@gmail.com](mailto:wiltonmontessoritrust@gmail.com).

Wellington City Mission 'Pack the Bus' is visiting us on Tuesday 30 November to collect items. See end of newsletter.



**Taonga Horomata – Hinegaro. Our virtue is Mindfulness**

The things that matter most in our lives are not fantastic or grand. They are moments when we touch one another. *Jack Kornfield*



Activity	Who's Involved	Date & Time	Cost
Poroporoaki	Immersion Strand whānau	Thursday 25 November	
Yr 8 Immunisations	Yr 8s	Tuesday 30 November	
City Mission Pack the Bus	Everyone	Tuesday 30 November	
Yr 8 Outing	Yr 8s	Wednesday 8 December	
Yr 8 Dinner	Yr 8s	Thursday 9 December	
Yr 8 Farewell	Yr 7/8s & whānau of Yr 8s	Monday 13 December	

Have a great week everyone.

Ngā mihi  
Clifford

**2021 Term Dates**  
Term 4: Ends on 15 Dec, 12 noon

**2022 Term Dates**

Term Start	Term End	Public Holidays
Tues 1 Feb	Thurs 14 Apr - TOD	Waitangi Day: Mon 7 Feb
Mon 2 May	Fri 8 Jul	Queen's Birthday: Mon 6 June Matariki: Fri 24 June
Mon 25 Jul	Fri 30 Sept	
Mon 17 Oct	Wed 14 Dec	Labour Weekend: Mon 24 Oct

**Teacher Only Days: 14 Apr, Fri 3 June, Fri 19 August**



**PACK THE BUS** - Each year since 1992 Pack The Bus has helped tens of thousands of Wellington families by collecting non-perishable food items, games, toys, toiletries, retail vouchers and so much more through our community. Any donation is amazing and always greatly appreciated. We've also included some examples below of the types of items the Wellington City Mission need extra help with this year:

**Essential Items:**

Spreads and Muesli bars, Weetbix, Oats & Muesli, Sugar and Milk Powder, Pasta Sauce, Tinned Soup/fish/meat, Biscuits and Crackers, Body Wash and Deodorant, Baby Food, Wipes and Nappies, Laundry Powder and Dishwashing Liquid.

**Christmas Items:**

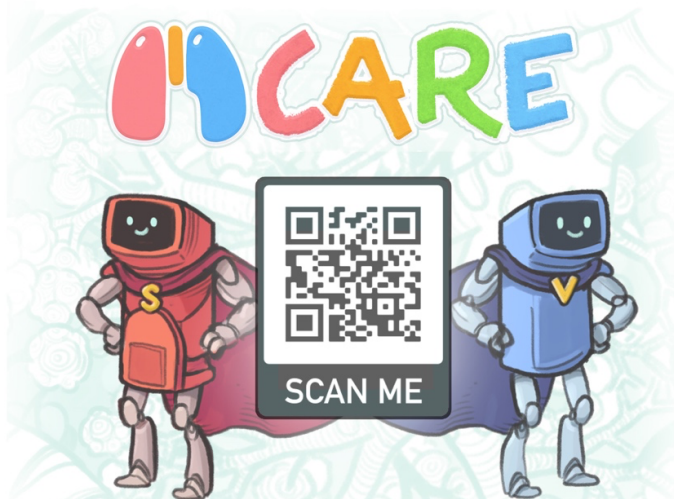
Small Christmas Cakes, Fancy biscuits/crackers, Fancy relishes/sauces, Salts/roasted nuts, Chippies Toiletries for the whole family, Retail vouchers.

**Toys: (new toys only please - and unwrapped)**

Construction Toys - Lego/Meccano, Art equipment, Educational toys and books, Puzzles, Baby toys for 0-2yr olds, Diaries/Calendars, Board games

*Upcoming*  
**COMMUNITY  
EVENTS**

**Marsden Preschool - places available 2021/2022.** With some of our older tamariki heading to school we have a few places available in the Marsden [Preschool](#). Marsden Preschool is for boys and girls aged 3 to school age. You can use your 20 ECE hours with us and we have a maximum of 20 tamariki, with a great adult to child ratio. You are warmly invited to visit and see our lovely indoor and outdoor play and learning spaces. Please contact Leigh McCathie on 476 8707 to organise your visit.



**Children's Asthma Study**

Help find the best inhaler for kids with asthma by joining the **C**hildren's **A**nti-inflammatory **R**eliever Study

**To take part you must:**

- Have been diagnosed with asthma by a doctor
- Be aged between 5 and 15 years
- Only use a reliever inhaler

**What does it involve?**

- 3 visits and 2 phone calls over 1 year
- Inhalers provided free of charge
- Breathing tests + asthma education
- Reimbursement for travel expenses

Learn more

(+64) 4 805 0201  
027 327 1191 care@mrnz.ac.nz mrnz.ac.nz/currently-recruiting

Approved by the Northern B Health and Disability Ethics Committee (20/NTB/200)



