

Inspiring a love of learning through an education that values the development of the whole child

18 October 2022

Week 1, Term 4

**REMINDER: THERE IS NO SCHOOL  
NEXT MONDAY OR TUESDAY (24-25 OCT)**



Kia ora koutou. Nau mai, hoki mai! This term is a short one, only eight and a half weeks, so we have a lot to pack in between now and the final day on Wednesday 14 December (at 12noon). Please take note of the events and dates printed in this newsletter.

**Potai/Hats** - Please ensure your child has a potai with a brim. Children are required to wear a hat outside. Otari School is a *Sun Safe* school. Ngā kaiako (teachers) will follow up on the requirement that all tamariki have a potai on their heads when outside. Children who do not wear hats end up having to play in the limited shade areas we have. We have some bucket hats for sale from the office, \$12 each.



**Nau mai, haere mai ki te kura o Otari** - We welcome three new teacher aides to our kura. Cynthia Aylward, who is working with ESOL students; Harry McKee, working in Ngaio and Suzanna Poole working in Tuī . We wish you each all the best for an enjoyable term.

We also welcome a new child and his whānau to Ngaio class; Jonathan Guan.

### **New Documents on the School Website:**

**PAT Reading Results – English medium strands, Years 4 to 8.** Last term students in the Montessori and Original strands sat Progress and Achievement Tests in Reading. These were:

- Progress and Achievement Test in Reading **Vocabulary** (word knowledge)
- Progress and Achievement Test in Reading **Comprehension** (understanding of texts)



Overall the results show most children have a good knowledge of words they have read and most are reading with good understanding. Many children achieved results that indicated a high to very high level of ability in both areas.

- In reading vocabulary 88% of girls and 97% of boys achieved results that were at or above expectation, with 66% above the average.

- In reading comprehension 81% of girls and 85% of boys achieved results that were at or above expectation, with 59% above the average.

A full report on the results of the two standardised reading tests is on the school website – From *Home/Kainga* click on *Learning* then *Achievement Reports* and you will see *PAT Reading Results 2022*.

**Annual Plan Goals** - The Board has made progress in relation to the strategic plan annual goals this year. I summarised this progress in an update last term for the board of trustees. This has now been put on the school website for everyone to read. From *Home/Kainga* click on *School/Kura*, then *Strategic Planning* and you will see *2022 Annual Plan Update*.

**ERO: Beginning Cycle of Review** - The Education Review Office will begin a cycle of school review this term. ERO has significantly changed its approach to reviewing. The key features of this new approach are outlined in a section on the ERO website. I have copied this section below.

**Key features of the approach and what will be reported on our website:** *The shift to the new approach to evaluation, Te Ara Huarau, supports each school's improvement over time. We have introduced a new reporting model to ensure it aligns with the key features of the new approach.*

Key features include ERO:

- *working with all schools in an ongoing way rather than as a one-off event*
- *connecting with each school's strategic planning and reporting cycle as part of their improvement journey*
- *working in partnership with schools, collaborating in support of equitable and excellent outcomes for all learners.*

Each school will:

- *have a dedicated ERO Review Officer (Evaluation Partner) who works alongside the school*
- *have a different experience depending on needs, strengths, and their school's specific evaluation focus*
- *be on a three-year evaluation cycle.*

**What will reporting on ERO's website look like?**

**Profile Report** - *As schools transition into the approach, ERO will work with schools to publish a one-off Profile Report. This will focus on the strategic goals schools have in place to improve learner outcomes and what the school is seeking to achieve through the evaluation.*

**Te Ara Huarau | School Evaluation Report** - *Within a three year cycle all schools would then have a Te Ara Huarau | School Evaluation Report. This report will include information about the school's improvement journey, what the school will have achieved for learners and their future priorities.*

**Board Assurance with Regulatory and Legislative Requirements Report** - *All schools will receive a Board Assurance with Regulatory and Legislative Requirements Report about their board's attestation to meeting those requirements.*



**Sharing Success:**

**Judo champion!** Congratulations go to Alexis Tzeng for winning gold at the Judo National Championships in Christchurch in her weight category and silver in the junior girls open weight competition. This was the first time Alexis competed in the nationals.

**Whaea Wairere (aka AJA) is an APRA silver scrolls finalist.** The APRA Silver Scroll Awards celebrate New Zealand's songwriters and composers. There are 3 finalists for the APRA Maioha (appreciation) Award for Contemporary Music. AJA & Byllie-Jean are finalists for the following:

**Te Iho**, written by AJA Ropata, Byllie-Jean, Chris Wethey, performed by AJA & Byllie-Jean.

We congratulate AJA & Billie-Jean on being selected as finalists and wish them all the best. You can watch the official video of Te Iho here: [https://www.youtube.com/watch?v=9BJ-7J0uk\\_g](https://www.youtube.com/watch?v=9BJ-7J0uk_g)



**Covid-19 and mask wearing** - We continue to monitor the covid-19 situation and respond to the advice and guidance of the Ministry of Education. There are currently 0 cases of Covid-19 at Otari School. In relation to mask wearing:

- Mask wearing by all students in years 4 to 8 is no longer strongly recommended by the ministry.
- The personal choice of all individuals within the school to wear a mask in the classroom (or at meetings, in the staffroom, or visiting the school) is supported.
- Children will not wear masks when they are participating in vigorous exercise.
- Children are unlikely to wear masks when engaging in performing arts.

**Junior Swimming** begins in week 3. If you have not yet done this, please complete the following link which, will help Easyswim to establish the swimming ability of your child: <https://www.easyswim.co.nz/school-lessons-survey>. Cost is \$30 per child.



**Calendar Orders** – Coming home today, are individualised order forms for calendars orders, which are done online. If you do not receive this form, please let Jillian know as she has a master list.

**CodeClub** will be starting back in week 3.



**Birthdays:** Happy birthday, this week, to Naylah and Tamatoa. Rā whānau ki a koe! We hope you all have a great day.



© Can Stock Photo

**Taonga Horomata/Virtues** - Joyfulness – Harikoa or Hakoakoa

The virtues card about Joyfulness tells us that Joyfulness is “not an occasional emotional reaction to luck or circumstances. It is a deep sense of wellbeing that fills us with delight and hope.”

At hui I talked to the children about a key to joyfulness is being happy with who we are and appreciating the fact that we are all different, with different physical characteristics, different talents, beliefs, ideas and backgrounds. Being happy with ourselves while appreciating others helps us to be joyful.

“Don’t be afraid to shine bright, be joyful and honour the whole truth of who you are.” (Gabby Bernstein)  
Joyfulness is related to optimism – “He ua ki te pō, he paewai ki te ao” (Rain at night, eels at dawn)



Building upwards from diligence  
3/Year 1-3-7

| Activity                    | Who's Involved    | Date & Time              | Cost |
|-----------------------------|-------------------|--------------------------|------|
| EPro8 Challenge             | Selected students | Fri 21 Oct               |      |
| Trip to Toi Whakaari        | Kaikōmako         | Thurs 28 Oct             | TBC  |
| Yr 3 Sports Festival        | Yr 3s             | Tues 1 Nov               |      |
| Yr 8 Immunisations          | Yr 8s             | Wed 2 Nov                |      |
| School Athletics            | All Students      | Thurs 3 Nov              |      |
| Junior Swimming             | Juniors           | Fri 4 Nov – 9 Dec        | \$30 |
| Marine Education            | Seniors           | 4/11 14/15 Nov 24/25 Nov | TBC  |
| WZ Athletics                | Selected students | Fri 18 Nov               |      |
| City Mission 'Pack the Bus' | Everyone          | Tues 29 Nov              |      |
| Yr 8 Dinner                 | Yr 8s             | Wed 30 Nov               | TBC  |
| Bush Day                    | Montessori Strand | Tues 6 Dec               |      |
| Yr 8 Farewell               | Yr 7/8s & Whānau  | Thurs 8 Dec              |      |
| Yr 8 Outing                 | Yrs 8s            | Fri 9 Dec                | TBC  |

Ngā mihi  
Clifford

**2022 Term Dates**

Term 4: Mon 17 Oct – Wed 14 Dec 12 noon

**Labour Weekend: Mon 24 Oct**

**Teacher Only Day: Tues 25 Oct**

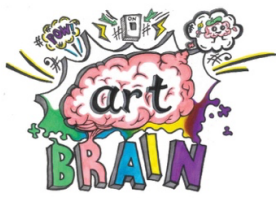


**Samuel Marsden Collegiate School - Girls Entering Year 9 In 2023.** Marsden warmly invites families of girls entering Year 9 in 2023 to their final Open Morning for 2022 on **Wednesday 26 October**, 8.45am-12pm. Please register at [marsden.school.nz/register](https://marsden.school.nz/register). Enrolments for entry in 2023 are now due. If you have any questions, or you'd like to arrange

a personal tour or a day in class for your daughter, please contact Enrolment Registrar Leigh McCathie on 476 8707 or [leigh.mccathie@marsden.school.nz](mailto:leigh.mccathie@marsden.school.nz)

**Football Skills For Term 4 \*\*\*New Day - Now On Weds \*\*\*** Aimed for beginners, this is a 8 week football skills programme held at the Green Room, Wests Rugby Club Rooms, Ian Galloway Park, Wilton, on Wednesday's From 3.30PM-4.30pm. Come and learn all about Football! This programme covers both individual and team skills including, Game rules, Ball control, Dribbling, Passing, Tackling, Defence, Team work, Goalkeeping, practice and warm up drills for players and teams. It is ideal to improve skills and confidence. It's also great practice for the summer series football competition!! To book go [https://kellysports.co.nz/kelly\\_events/view/14831](https://kellysports.co.nz/kelly_events/view/14831)





## AFTER SCHOOL CREATIVE ART COURSES

Thursday 3:30pm - 5:30pm | Term 4 | 8 Weeks | Cost \$200 Per Term

### OPEN TO ALL SCHOOLS

Venue: Karori West Normal School Art Room  
School Years 3 - 8 Only | All Art Materials Are Included

Children are welcome to come to class from 3pm to have a snack and break before class starts at 3:30pm.

### COURSE OUTLINE

Step By Step Lessons | Positive Creative Mindfulness | Critical Creative Thinking  
Project Planning & Development Skills | Technical Art Skills  
Frameable Personalised Amazing Art Work!

**IMPORTANT NOTE:** There is no skill level expected BUT students enrolled must have a love for being creative! Children must be able to cope with sitting down and following instructions and completing creative projects for 2 hours. It will be a calm and super fun environment but focus will be needed to listen and complete work.

**CONTACT** Lauren Poutawera | [artbrainnz@gmail.com](mailto:artbrainnz@gmail.com) | 0220752189 | [www.enrolmy.com/artbrain](http://www.enrolmy.com/artbrain)

Come and see what your talented neighbours can do

# ART EXHIBITION

Karori Art and Craft Centre  
7 Beauchamp Street, Karori

October 28<sup>th</sup> to 30<sup>th</sup> 2022

Free entry 10 – 4pm. EFPOS available

[info@kacc.org.nz](mailto:info@kacc.org.nz) 04 476 6817 [www.kacc.org.nz](http://www.kacc.org.nz)

# E-WASTE RECYCLING DROP OFF DAY

Saturday 9am-2pm  
29 October 2022

Postponement Day: Sat 5 Nov

St. Mary's College (Netball Courts)  
Hawkestone Street Entrance

## We Accept These Items

- . Flat screen TVs/Monitors
- . Computers/Laptops
- . Tablets/iPads/Servers/Routers
- . Modems/Switches/Printers
- . Scanners
- . Ink cartridges/Keyboards/Mice
- . Cell phones/Water blasters
- . Gaming Consoles
- . DVD & VCR players
- . Cameras/Stereos
- . Projectors
- . Batteries /Cables/Wiring
- . Toasters/Electric jugs/Irons
- . Vacuum cleaners/Oil heaters
- . Microwaves/Dehumidifiers
- . Electric frypans/Deep fryers
- . Lawn Mowers/Leaf blowers
- . Weedeaters



## We do not accept these items

- . CRT TVs/Monitors
- . Whiteware/CDs
- . Car batteries
- . Speakers

## Cash Payment Only

Small Items - \$2  
Medium Items - \$5  
Large Items - \$10 - \$25  
Spectacles - FREE

### Contacts

Joy Nagrampa 021-633225  
[mcsh.march22art@gmail.com](mailto:mcsh.march22art@gmail.com)



METROPOLITAN CATHEDRAL  
OF THE SACRED HEART



[Enrol Now For Term 4 2022!!](#)

Wow, it's Term 4!

**Get in quickly to enroll your child in Marrzipan class for term 4**

More than half of our classes are already completely full with students from previous terms continuing. If you would like to return to Marrzipan this term after taking a break, for a sibling to join in, or to get in on the marrzi-madness for the first time- click the enrolment button at the top of this email or reply to this email expressing interest.

Our Word of the Term:

**Share It!**

**We OWNED IT in Term One, We TOOK IT in Term Two, we GREW IT in Term Three and now it's time to SHARE IT!**

**We all like to share because it fills us with a warm fuzzy feeling. At Marrzipan we're all about sharing. This term our students will be inspired to show off all the cool stuff they'll be working on. This includes their play, their super cool character voices, any new world-changing ideas! Most importantly, they'll be sharing their super cool and quirky personalities with those around them.**



# Term 4 Children's Art Courses

Sculpting Animals with Sarah Dean  
Mon 17 Oct - 12 Dec 3.30 - 4.30pm

Art for 8 year plus with Rowena Fry  
Tues 18 Oct - 6 Dec 4.15 - 5.30pm

Julie's Art Adventures with Julie Moonlight  
Thu 20 October - 8 Dec 4 - 5.15pm

Beginner Painting Watercolour Robyn Eastgate-Manning  
Thu 20 Oct - 29 Nov 7 - 9pm

For more details or to book a place visit  
<https://www.kacc.org.nz>



7 Beauchamp Street, Karori  
[info@kacc.org.nz](mailto:info@kacc.org.nz)  
[www.kacc.org.nz](http://www.kacc.org.nz)



Parent Help  
For Parent and Family Support

**AFFORDABLE COUNSELLING IS AVAILABLE**

no long waitlists  
self-referral online  
for children and parents  
all ages and stages

## WE HELP WITH:

rude behaviour • pushing boundaries • technology and device use • sexual behaviour • separation • blended families • parenting alone • anxiety and depression • sibling rivalry • bullying • tantrums • self-harming • refusing to go to school ... and much more.

request your counselling session now at:  
[www.parenthelp.org.nz/counselling](http://www.parenthelp.org.nz/counselling)



# ADVENTURE WEEKEND

Wellington City edition

Friday 12pm to Sunday 12pm during the year as advertised.  
Cost: \$699.50 per cub | Age ranges: 5 - 17 years | 15% Off for Wild Card Holders.  
Food, accommodation, transport and supervision are all included in the package.  
MSD Approved and WINZ Subsidised.



[www.PRIDELANDS.co.nz](http://www.PRIDELANDS.co.nz)  
0800 PRIDE 4 YOU



Friday: Depart from the centre or school at 12pm.

Day Activities: On the way to the accommodation, stop at Fergs Kayak's to do Kayaking and Rock climbing - <https://fergskayaks.co.nz/pages/wellington>  
Ice Skating at Daytona Adventure Park ice skating ring. <https://www.daytonaadventurepark.co.nz/> (Plan B)

Night Activities: After setting up camp, go to the Recreational Centre. Go to the swimming pool (Plan B)  
Arrive at camp and set up (Kiwi Holiday park - <https://www.wellingtonsholidaypark.co.nz/>)

Saturday  
Day Activities: Paintball <https://www.brewtown.co.nz/> Archery (Plan B)

Night Activities: Bowling at Strike <https://www.strikenz.co.nz/> Laser Tag (Plan B)

Sunday: Depart camp at 10am  
Check out community markets  
Dropped at home/centre at 12pm



# ADVENTURE WEEKEND



## Kapiti edition

Friday 12pm to Sunday 12pm during the year as advertised.  
 Cost: \$699.50 per cub | Age range: 5 - 17 years | 15% Off for Wild Card Holders.  
 Food, accommodation, transport and supervision are all included in the package.  
 MSD Approved and WINZ Subsidised.



www.PRIDELANDS.co.nz  
 0800 PRIDE 4 YOU

● Friday: Depart from the centre or school at 12pm.

**Day Activities:** On the way to the accommodation, stop at Adrenalin forest <https://adrenalin-forest-nz.appointedd.com/bookable/621861fa3408912ef050e99b>  
 Long lunch at a café (Plan B)  
 Arrive at camp and set up

● Saturday

**Day Activities:** Rangatira Kapiti Day trip (Can snorkel too) - <https://www.kapitiislandeco.co.nz/visit-kapiti-island>  
 Batting cages - <http://www.kapitisoftball.co.nz/Contact-us/Contact-us> (Plan B)

**Night Activities:** Fish and Chips at the beach

● Sunday: Depart camp at 10am  
 Dropped at home/centre at 12pm

# ADVENTURE WEEKEND



## Upper Hutt edition

Friday 12pm to Sunday 12pm during the year as advertised.  
 Cost: \$699.50 per cub | Age range: 5 - 17 years | 15% Off for Wild Card Holders.  
 Food, accommodation, transport and supervision are all included in the package.  
 MSD Approved and WINZ Subsidised.



www.PRIDELANDS.co.nz  
 0800 PRIDE 4 YOU

● Friday: Depart from the centre or school at 12pm.

**Day Activities:** On the way to the accommodation, stop at H2O Xtream <https://www.h2oxtream.com/Home>  
 Set up camp (Kaitoke regional park) <https://www.newzealand.com/nz/feature/kaitoke-regional-park/>

**Night Activities:** Explore the park and star gazing

● Saturday

**Day Activities:** Wellington rafting - <https://www.wellingtonrafting.nz/white-water-rafting>  
 Patuna Farm adventures - <https://www.patunafarm.co.nz/> (Plan B)

**Night Activities:** Wellington speedway <https://www.wellingtonspeedway.co.nz/calendar>  
 Bonfire by the river (Plan B)

● Sunday: Depart camp at 10am  
 Dropped at home/centre at 12pm

# ADVENTURE WEEKEND

## Porirua edition

Friday 12pm to Sunday 12pm during the year as advertised.  
Cost: \$699.50 per cub | Age range: 5 - 17 years | 15% Off for Wild Card Holders.  
Food, accommodation, transport and supervision are all included in the package.  
MSD Approved and WINZ Subsidised.



www.PRIDELANDS.co.nz  
0800 PRIDE 4 YOU

*For Adventures Closer to Home*  
2nd - 4th June 2023

**Friday:** Depart from the centre or school at 12pm.  
Arrive at camp and set up (Camp Elsdon  
(<https://www.campelsdon.co.nz/>)

**Day Activities:** Go to the pools - Te Rauparaha Arena  
and Aquatic Centre -  
<https://terauparaha-arena.co.nz/>

**Night Activities:** Bush walk to see the glow worms

**Saturday**

**Day Activities:** Day trip to Mana Island  
(<https://manaisland.org.nz/visitors-2/>)  
Go-Karting and Trampoline Park (Plan B)

**Night Activities:** Dinner out at the restaurant  
Movie at the Cinemas (Plan B)

**Sunday:** Depart camp at 10am  
Go to community Markets (if there's time)  
**Dropped at home/centre at 12pm**

